

USER'S MANUAL

ArboWebForest *WebUI*

arbonaut

USER'S MANUAL

TABLE OF CONTENTS

	<u>Page #</u>
1.0 GENERAL INFORMATION	1-1
1.1 System Overview	1-1
1.2 Organization of the Manual	1-1
2.0 SYSTEM SUMMARY	2-1
2.1 System Configuration	2-1
2.2 User Access Levels	2-1
2.3 Contingencies	2-1
3.0 GETTING STARTED	3-1
3.1 Opening ArboWebForest and logging In	3-1
3.2 Web User Interface overview	3-2
4.0 Map Catalog	4-1
5.0 Map	5-1
5.1 Map controls	5-1
5.2 Toolbar	5-1
5.2.1 Center map to maximum extent	5-1
5.2.2 Map view control	5-1
5.2.3 Edit feature on - off	5-2
5.2.4 Create features	5-2
5.2.5 Measurement tools	5-2
5.2.6 Print to PDF	5-3
5.2.7 Manage Workspaces	5-5
5.3 Overview Map	5-6
6.0 Features and controls	6-1
6.1 Layer control	6-1
6.2 Feature Control	6-2
6.3 Legend	6-3
6.4 Search	6-4
6.5 Online user guide	6-5
6.6 Coordinates	6-5
7.0 Editing features	7-1
8.0 Adding comments and attachments to features	8-1
9.0 Importing and exporting data	9-1
10.0 Changing User ID and Password	10-1

11.0	<i>Exit System.....</i>	<i>11-1</i>
-------------	--------------------------------	--------------------

1.0 GENERAL INFORMATION

1.0 GENERAL INFORMATION

General Information section explains in general terms the system and the purpose for which it is intended.

1.1 System Overview

ArboWebForest is a service, which allows planning, collecting and sharing information about forest plots. The service consist of two applications: ArboWebForest Mobile Client, ArboWebForest server and AWF Communication agent. The ArboWebForest Mobile Client application provides electronic version of form used in collecting plot information. The application saves data collected to database. Its operational status is under development. ArboWebForest operates on mobile devices with Android operating system. The ArboWebForest Server is a web map application where the locations for data collection can be planned and made available for Mobile Clients for the data collection on the field. After field work the measure plot data will be uploaded to the ArboWebForest Server and the data can be reviewed and shared. The plot measurement can be downloaded from ArboWebForest server to external analysis tools and the analysis results can be uploaded back to ArboWebForest server for dissemination of the result.

1.2 Organization of the Manual

The user's manual consists of five sections: General Information, System Summary, Getting Started, Using The System, and Reporting.

General Information section explains in general terms the system and the purpose for which it is intended.

System Summary section provides a general overview of the system. The summary outlines the uses of the system's hardware and software requirements, system's configuration, user access levels and system's behavior in case of any contingencies.

Getting Started section explains how to get ArboWebForest and install it on the device. The section presents briefly system menu.

Using The System section provides a detailed description of system functions.

Reporting section describes in what way information collected by the application are presented and how to access the information.

2.0 SYSTEM SUMMARY

2.0 SYSTEM SUMMARY

System Summary section provides a general overview of the system. The summary outlines the uses of the system's hardware and software requirements, system's configuration, user access levels and system's behavior in case of any contingencies.

2.1 System Configuration

ArboWebForest web UI is a web application and application requires only web browser and internet connection. The supported browsers are Firefox 3 or newer, Internet explorer 7 or newer and Google Chrome. ArboWebForest is available for registered users only . The registration can be done online on ArboWebForest home page <http://www.arbowebforest.com>.

2.2 User Access Levels

ArboWebForest web application is available for registered users only. User can set the visibility of his/her own map features to him/herself only or all registered users.

2.3 Contingencies

Current version of ArboWebForest does not contain a version control mechanism for sample plots i.e. the same plot can be edited simultaneously in web application and in Mobile Client. The new saved changes will always overwrite the previous changes .

3.0 GETTING STARTED

3.0 GETTING STARTED

Getting Started section explains how to login into ArboWebForest web application.. The section also gives an overview of ArboWebForest web user interface

3.1 Opening ArboWebForest and logging In

Start ArboWebForest by opening it's main page <http://www.arbowebforest.com>. Give the username and password you have received when you registered for ArboWebForest and press "Login"

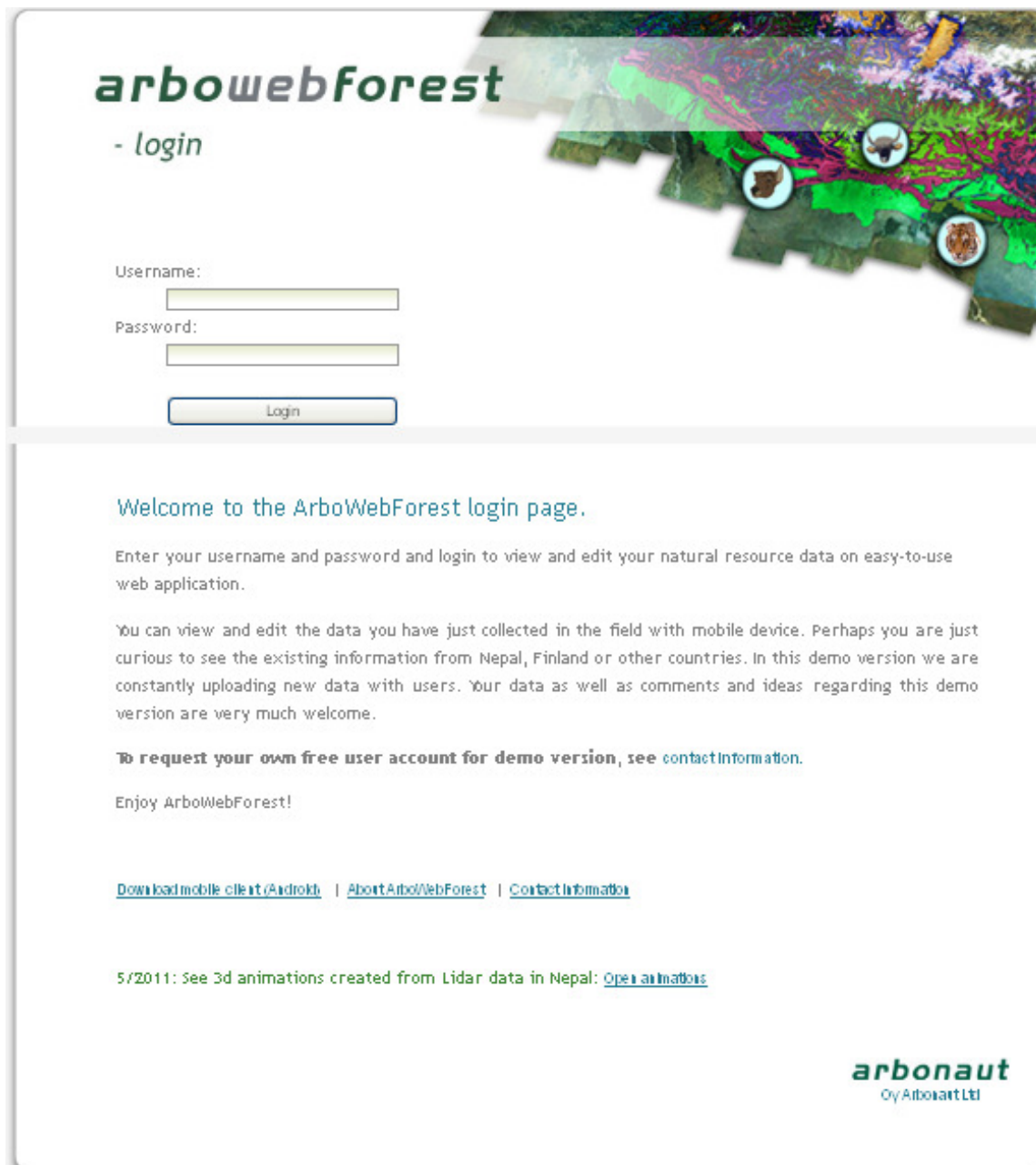
The image shows the ArboWebForest login page. At the top, there is a header with the text "arbowebforest" in a stylized green font, followed by "- login" in a smaller black font. To the right of the text is a colorful, abstract graphic resembling a map or a forest landscape with various colored regions and circular icons. Below the header, there is a login form with two input fields: "Username:" and "Password:". Below these fields is a "Login" button. Under the form, there is a section titled "Welcome to the ArboWebForest login page." followed by a paragraph of text: "Enter your username and password and login to view and edit your natural resource data on easy-to-use web application." Below this is another paragraph: "You can view and edit the data you have just collected in the field with mobile device. Perhaps you are just curious to see the existing information from Nepal, Finland or other countries. In this demo version we are constantly uploading new data with users. Your data as well as comments and ideas regarding this demo version are very much welcome." Below this is a line of text: "To request your own free user account for demo version, see [contact information](#)." Below this is the text "Enjoy ArboWebForest!". At the bottom of the page, there are three links: "[Download mobile client/Android](#)", "[About ArboWebForest](#)", and "[Contact Information](#)". Below these links is a line of text: "5/2011: See 3d animations created from Lidar data in Nepal: [Open animations](#)". At the bottom right of the page is the "arbonaut" logo, with "Oy Arbonaut Ltd" written below it.

Figure 1. ArboWebForest login page

3.2 Web User Interface overview

ArboWebForest web user interface is divided in three main panels: Map catalog (1), Map (2) and features and controls (3).

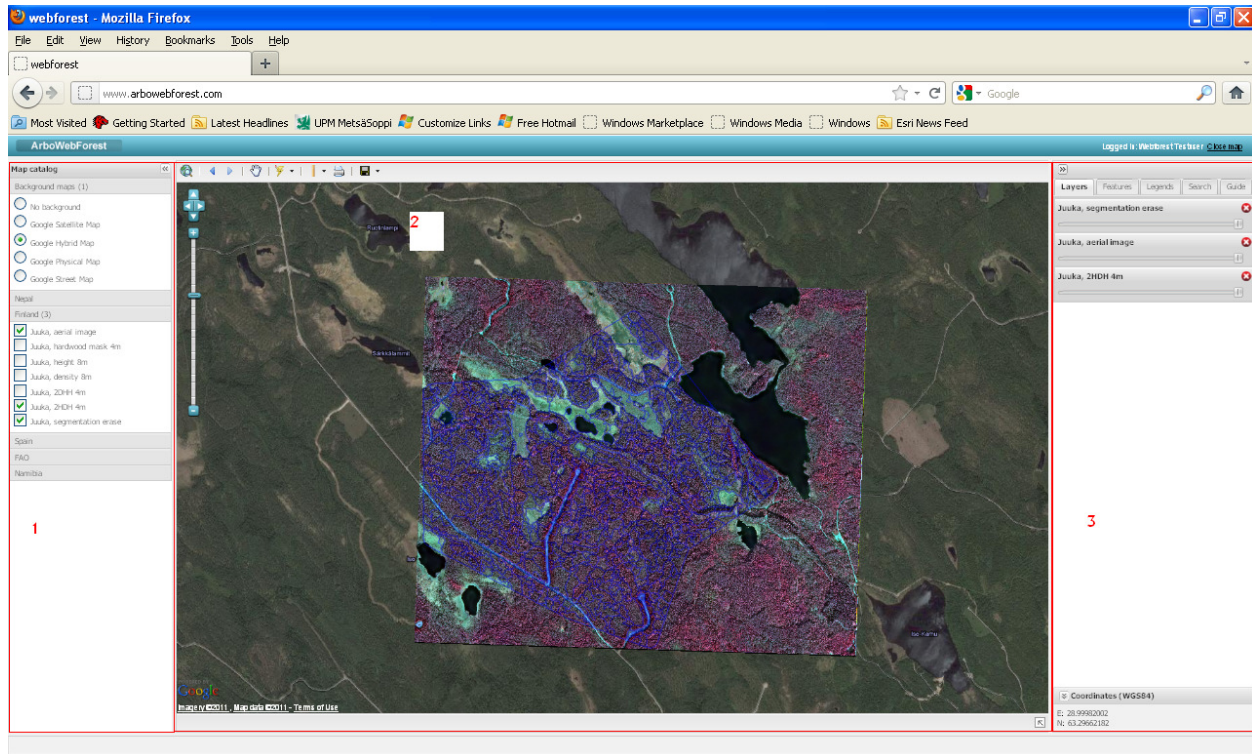






Figure 2. ArboWebForest web user interface

Map catalog panel can be closed from  button on top right corner of the map catalog panel and opened from  button on top left corner of the window.

Features and Controls panel can be closed from  button on the top left corner of the Features and Controls panel and opened from  button on the top right corner of the window.

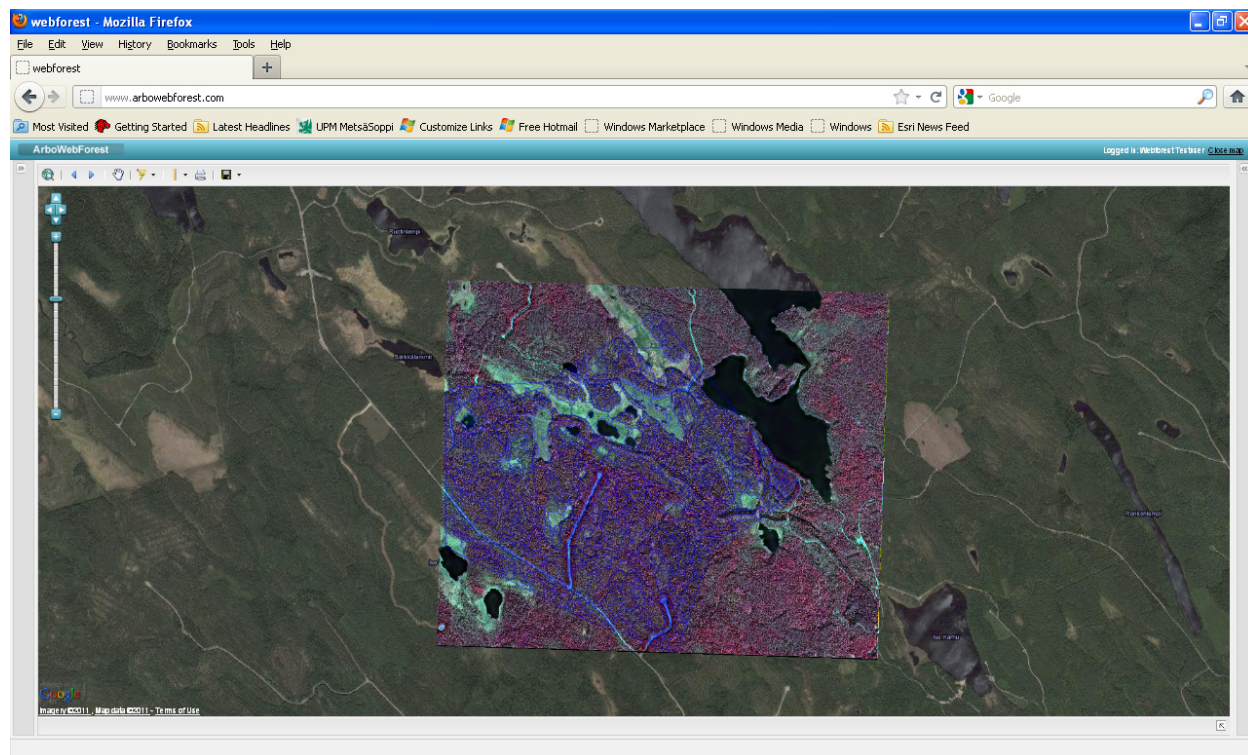


Figure 2. ArboWebForest web user interface when Map Catalog and Features and Controls panels are closed

4.0 MAP CATALOG

4.0 MAP CATALOG

Map catalog, marked with label 1 in figure 2, contains background maps, aerial images etc. layers available for the ArboWebForest user. The layers are organized by theme and by clicking the theme user can open and close the list of layers available in the theme. User can set the map layers on by selecting the layer from Map catalog.

The order and transparency of the map layers are managed in layer control tab of Features and controls panel. For more information on managing map layers see chapter 6.1

5.0 MAP

5.0 MAP

On the top left corner of the Map area are map controls and toolbar.

5.1 Map controls



Pan (scroll) map by pressing the arrows. Pan works also by moving the cursor on the map while the left mouse button is down.



Zoom in (+), zoom out (-) by moving the slider. Zoom works also by mouse scroll when cursor is on the map: scroll forward to zoom in and backwards to zoom out.

Window zoom: Keep the left mouse button down and press <Shift> key down to draw the area to zoom on the map.

5.2 Toolbar



Toolbar contains tools for feature creation measurements and workspace management.

5.2.1 Center map to maximum extent



Center map to maximum extent

5.2.2 Map view control



Back to previous map view



Go to next map view

5.2.3 Select feature on - off



Select feature on – off. When this selection is on you can view the attributes of the feature by clicking the feature on the map. When this selection is off you cannot select feature on the map. This tool is on by default. Additional information on editing the features is available in chapter 3.3

5.2.4 Create features


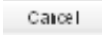


ArboWebForest supports point, line and polygon type features.



Create Point feature

After selecting Create Point Feature, show the location on the map for the feature and click the left mouse button. Next the application requests the feature category. The feature category dictates what kind of attributes can be given into the feature. Currently the available categories are Lidar plots, Sample plots and Mammals. On attribute data window, user must define the visibility of the created feature (visibility field at the end of form). User can restrict the visibility to him/herself only or allow the feature to be visible for all ArboWebForest users.

After filling in the necessary attribute data, the feature is saved by pressing the  button. The  button cancels the creation of the feature and closes the attribute widow.

After user has created a point feature, the create point feature tool is deactivated and selection tool is activated to allow viewing attributes of a feature or moving the map.



Create line feature

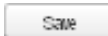
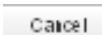
Line feature is not currently enabled



Create Area feature

After selecting Create area feature, show starting point of the first border segment on the map, draw first segment of the border, click the left mouse button, draw the next border segment, , click the left mouse button etc. At the end of the last border segment double click the left mouse button. Next the application requests the feature category. The feature category dictates what kind of attributes can be given into the feature.

On attribute data window, user must define the visibility of the created feature (visibility field at the end of form). User can restrict the visibility to him/herself only or allow the feature to be visible for all ArboWebForest users.

After filling in the necessary attribute data, the feature is saved by pressing the  button. The  button cancels the creation of the feature and closes the attribute widow.

After user has created an area feature, the create area feature tool is deactivated and selection tool is activated to allow viewing attributes of a feature or moving the map.

5.2.5 Measurement tools



ArboWebForest has tools for measuring distance and area

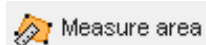


Measure distance

Measure distance

Measure distance tool gives the distance along digitized line. To start measurement, show the starting point on the map and click the left mouse button.. Draw the first segment of the distance to be measured and click the left mouse button. Draw then the next segment of the distance to be measured and click the left mouse button etc. at the end of the last segment of the distance to be measured double click the left mouse button. The distance from start to the end of the last segment of the line, measured along the digitized line, is shown on lower left corner of ArboWebForest window.

The measure distance tool is active until user selects another tool e.g. user selects select feature on-off switch.



Measure area

Measure Area

Measure area tool gives the area of digitized polygon. To start measurement, show the first corner on the map and click the left mouse button. Draw the first segment of the border of the polygon to be measured and click the left mouse button. Draw then the next segment of the border of the polygon to be measured and click the left mouse button etc. at the last corner of the polygon to be measured double click the left mouse button. The area of the digitized polygon is shown on lower left corner of ArboWebForest window.

The measure area tool is active until user selects another tool e.g. user selects select feature on-off switch.

5.2.6 Print to PDF



Print to PDF tool opens a print menu where user can select the paper size and orientation, map scale and whether the legend will be also printed to PDF map. The printing area is shown as a green rectangle in the center of the map window (see figure 3.)

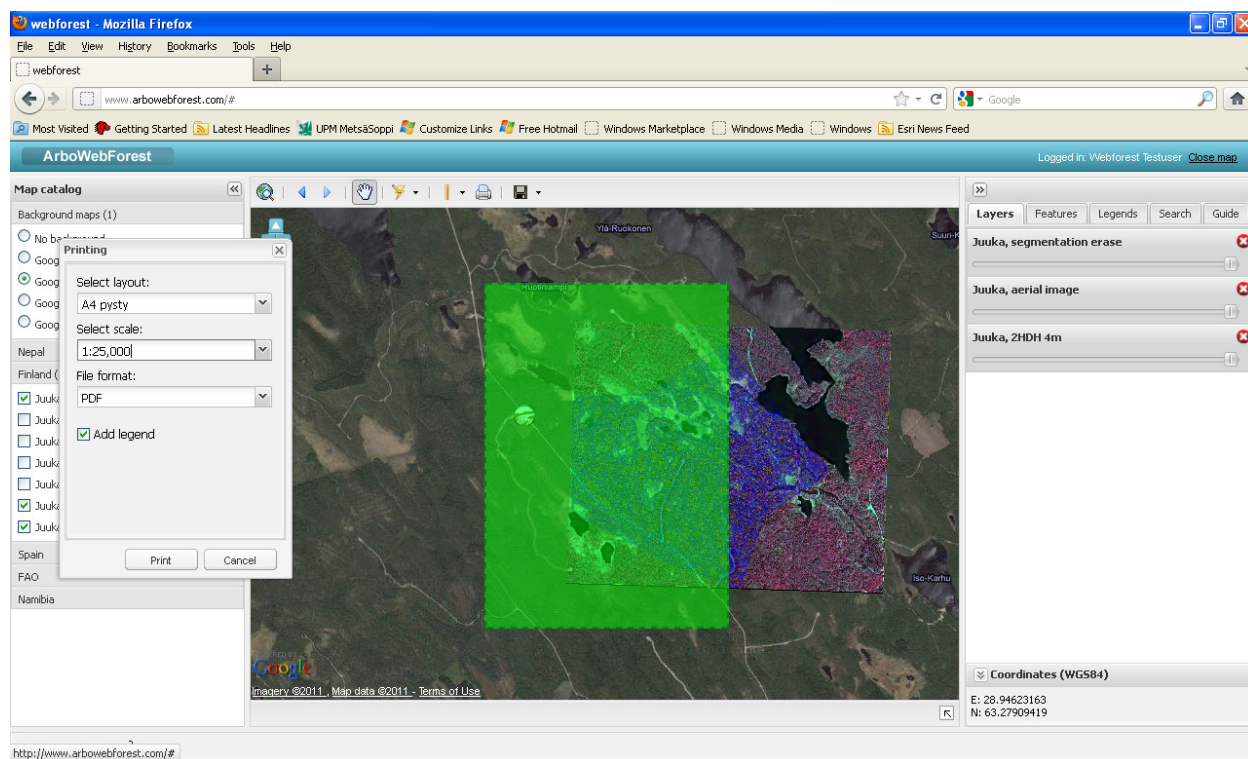


Figure 3. Print menu and print area

By panning the map user can move the map so that the area to be printed is under the green rectangle (see figure 4)

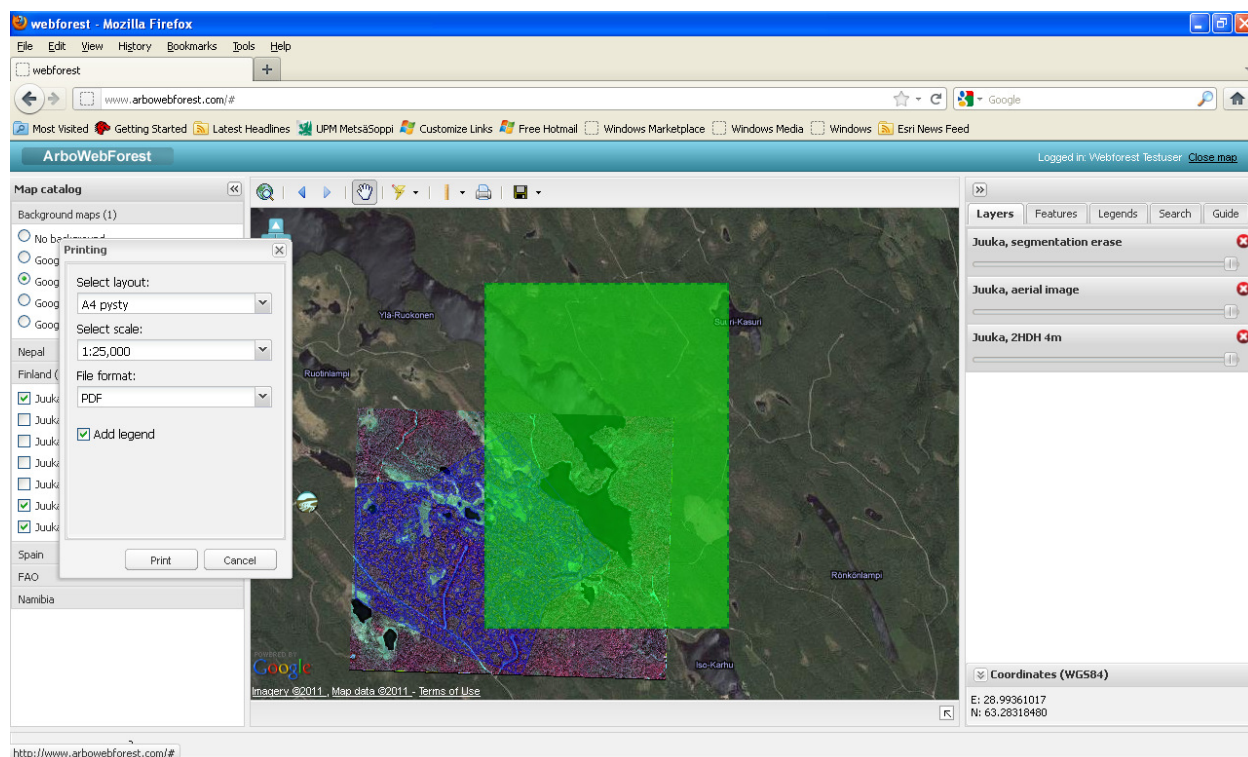


Figure 4. Print menu and print area after the map is panned to correct location for the printing


5.2.7 Manage Workspaces



Manage Workspaces. User can save the current UI setup to workspace. When workspace is opened the ArboWebForest web user interface will be opened with the same map location, map layer and feature setup as the workspace was saved. The workspace can be configured to be accessible (and visible) only to the user him/herself or for all users. Workspace can be accessed directly using its web address, making the sharing of the workspace easy.



Save

Save workspace. When Selecting Save workspace application opens the Workspace menu for filling in the workspace name and visibility of the workspace. When user press the  button the workspace is created and the user is shown the web address for direct access to the workspace.






Update

Update the current workspace. When user selects the update in Manage workspaces menu, the application will update the current workspace with the current user interface setup.



Open

Open workspace shows a list of workspaces available for the user. When user selects the workspace also the web address of the selected workspace is shown. When  button is pressed the selected workspace will be opened for user. When  button is pressed the selected workspace is deleted. The  button exits from open workspace menu without any selections.

5.3 Overview Map

Overview Map shows the current location on full base map. It can be opened from lower right corner of the map. Overview Map is shown in figure 5.

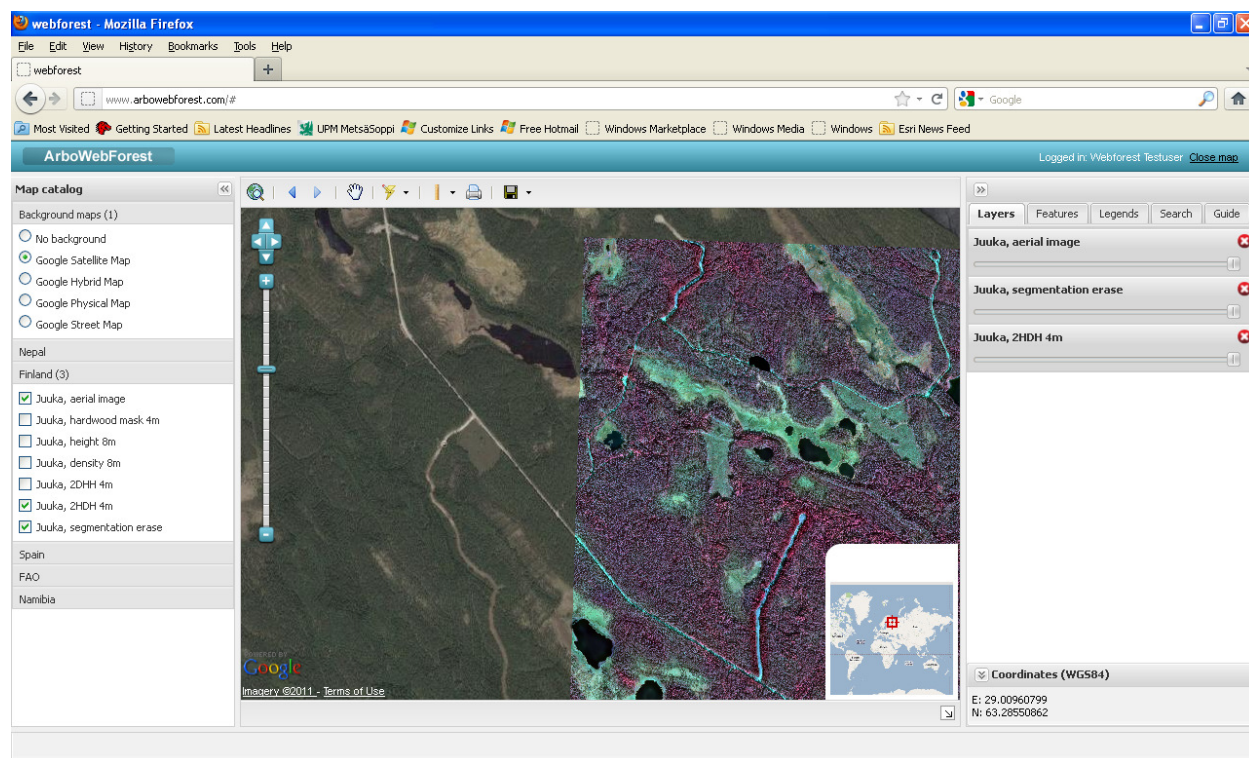


Figure 5. Overview Map

6.0 FEATURES AND CONTROLS

6.0 FEATURES AND CONTROLS

Features and controls section, on the right side of the ArboWebForest window contains controls for layers and features and a search functionality. It also contain layer legend and instruction for ArboWebForest .

6.1 Layer control

The opaqueness and order of the layers can be controlled in Layer tab shown in figure 6. The layers are shown in top –down order .

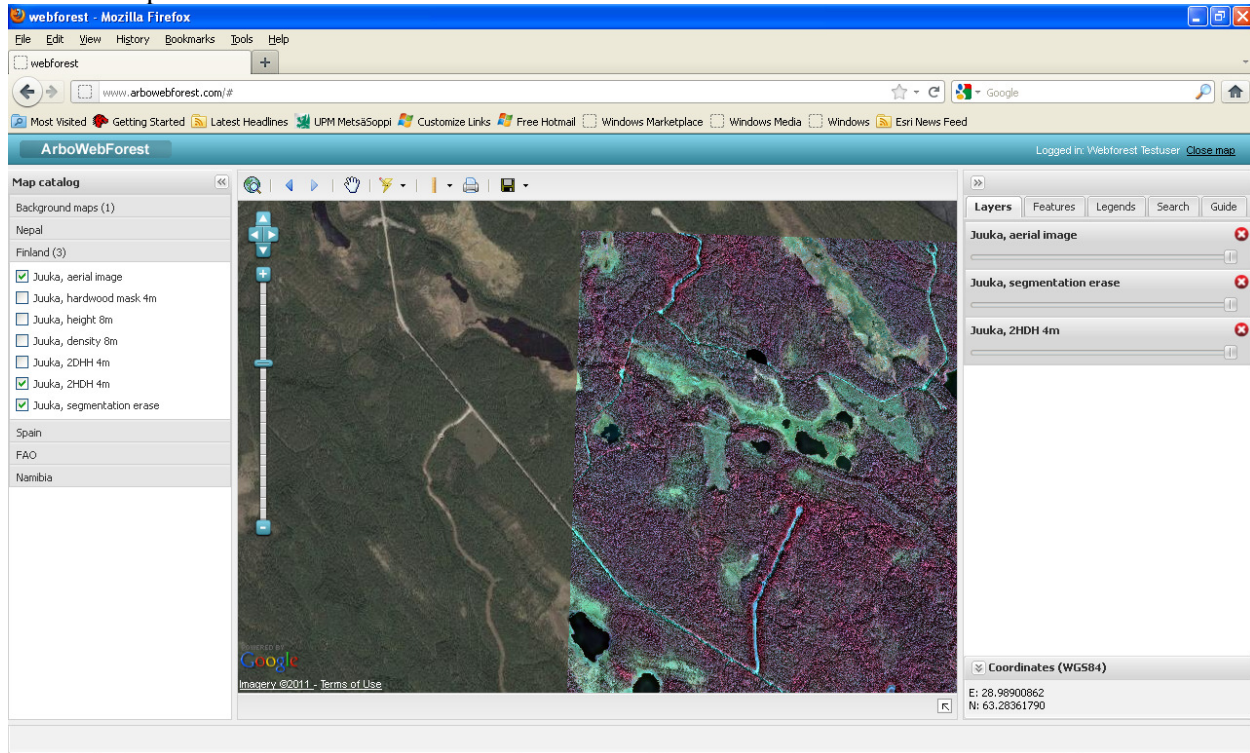


Figure 6. Layer control

The layer order can be changed by moving the layer into the new position (move cursor on the top of the layer panel, keep left mouse button down and drag the layer panel to a new position) as shown in figure 7 .

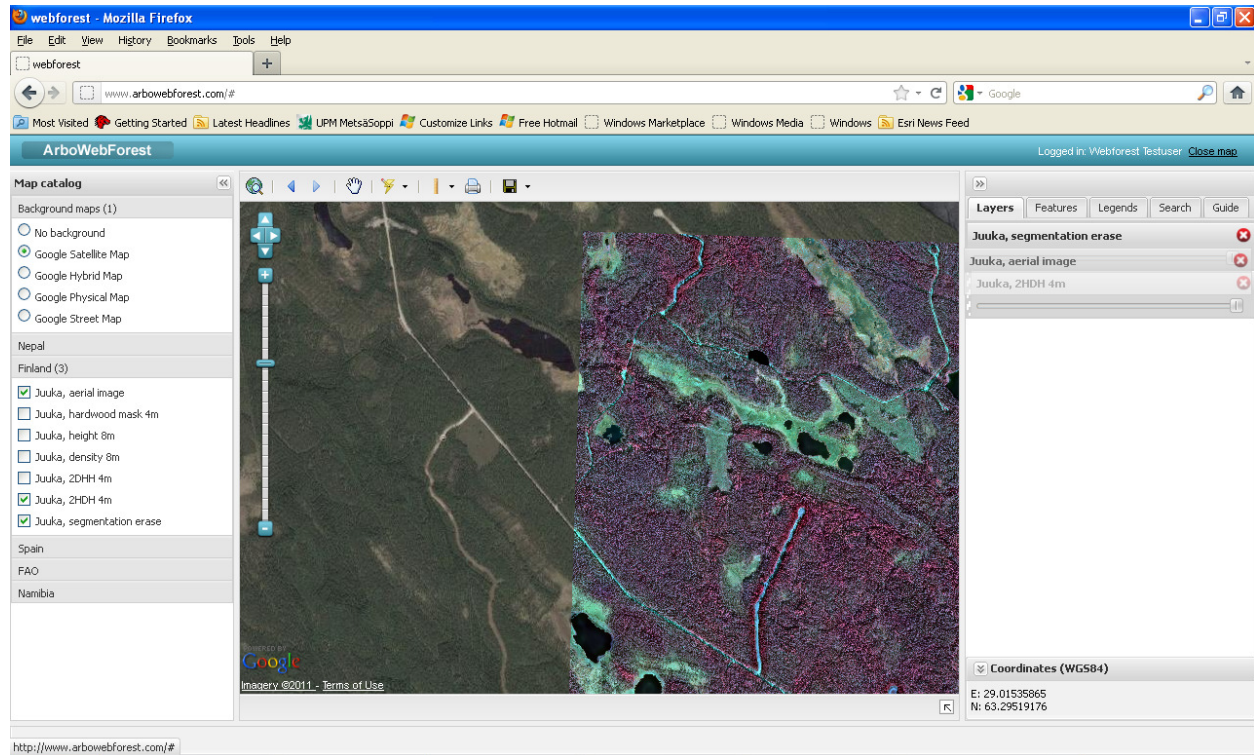


Figure 7. Changing the layer order

Layer opaqueness can be adjusted from the slider in layer panel (0%= transparent, 100%=opaque)

6.2 Feature Control

Which features are shown on the map is controlled in Features tab. User can select whether to look his/her own features or also other user's feature using pulldown menu. The visibility can also be set by feature category and feature class. The features tab is shown in figure 8.

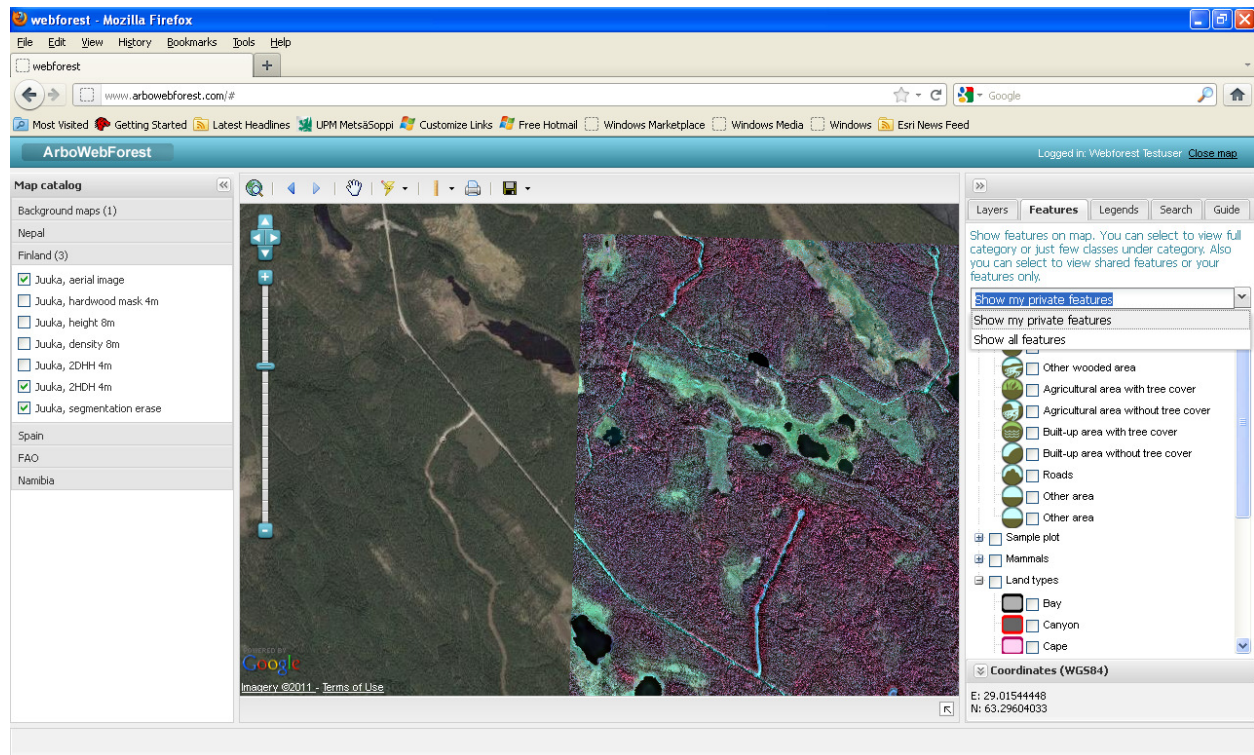


Figure 8. Feature control

6.3 Legend

If the Map layers contains Legend information, it is shown in legend tab for the map layers selected in Map catalog. The Legend tab is shown in figure 9.

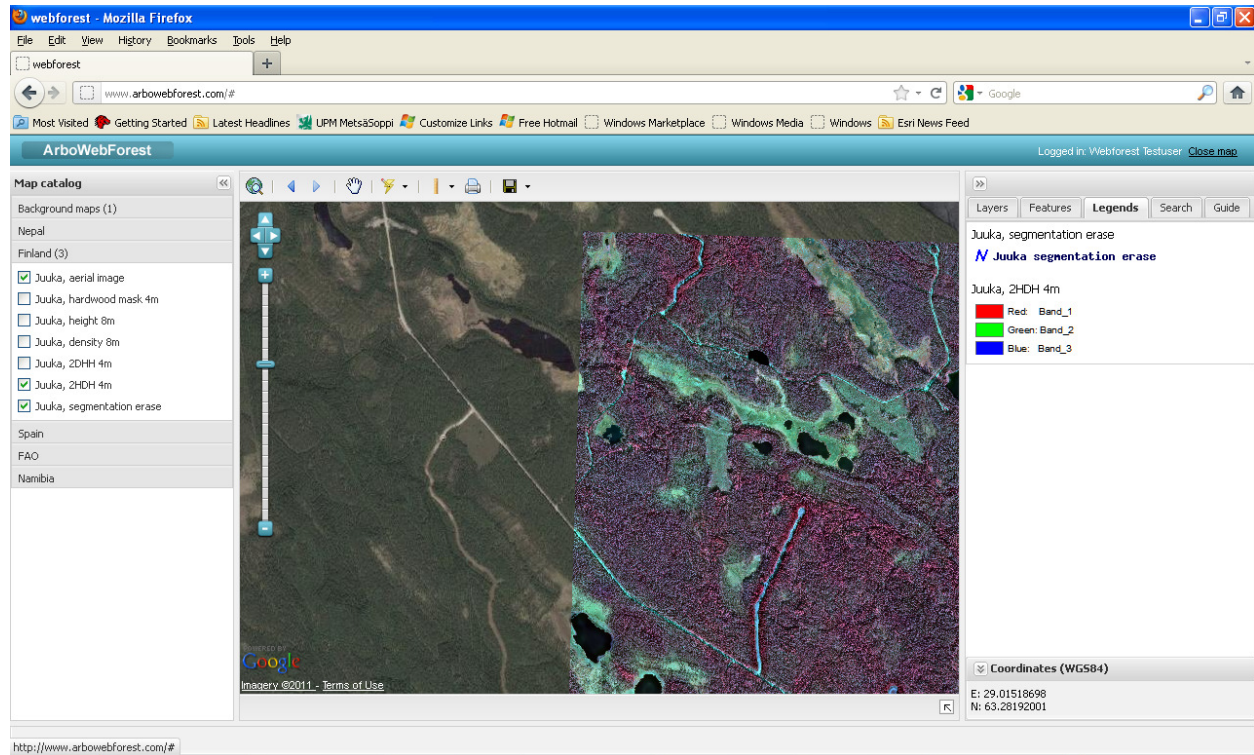


Figure 9. Legend

6.4 Search

ArboWebForest has a search functionality where user can search places by their name. Search is available in Search tab. Search lists all names starting with the given search string. When the name is selected in the result box, the application will center the map to the selected location. Search tab is shown in figure 10

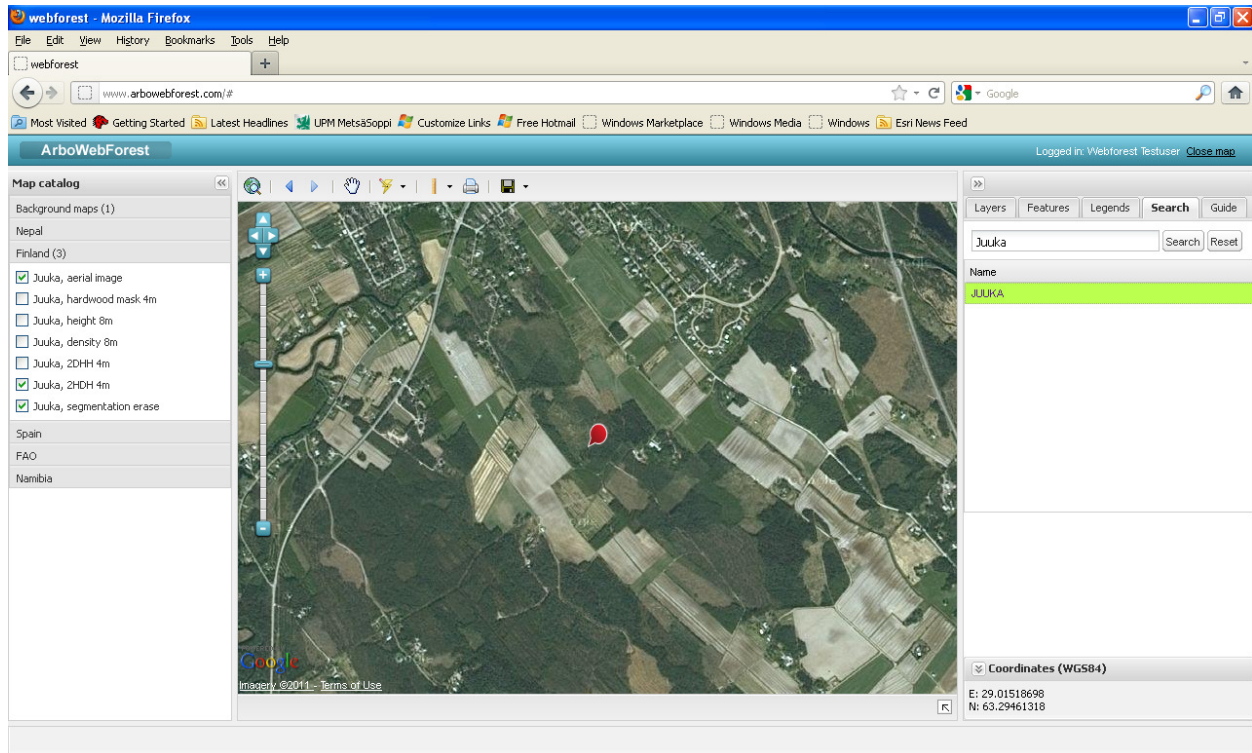


Figure 10. Search

6.5 Online user guide

On Line user guide can be found in Guide tab.

6.6 Coordinates

Coordinates of the cursor position on the map are shown at the bottom of the features and controls panel on lower right side of the window.

7.0 EDITING FEATURES

7.0 EDITING FEATURES

Point, line and area features can be edited by setting the Select features on, pointing the feature on the map and opening it for viewing with left mouse click.

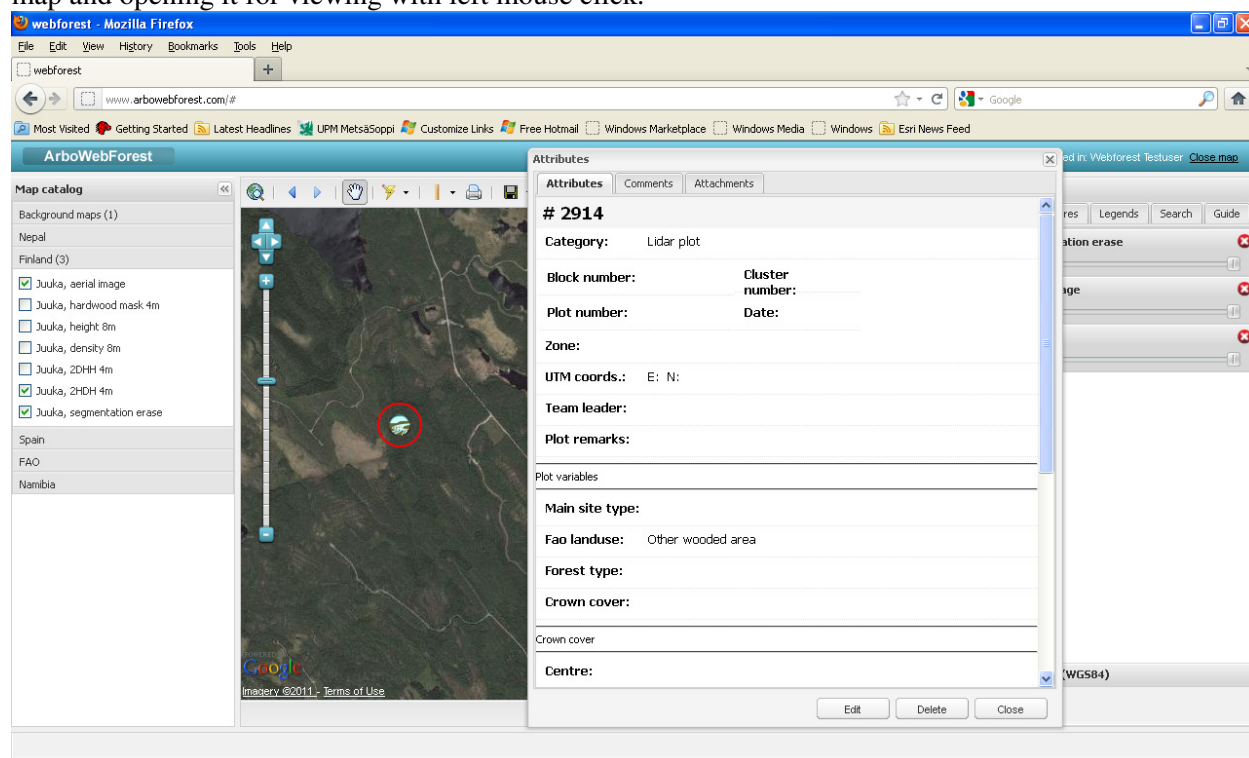


Figure 11. Attribute window of the feature

from button (see figure 11) the feature goes into edit mode (figure 12).

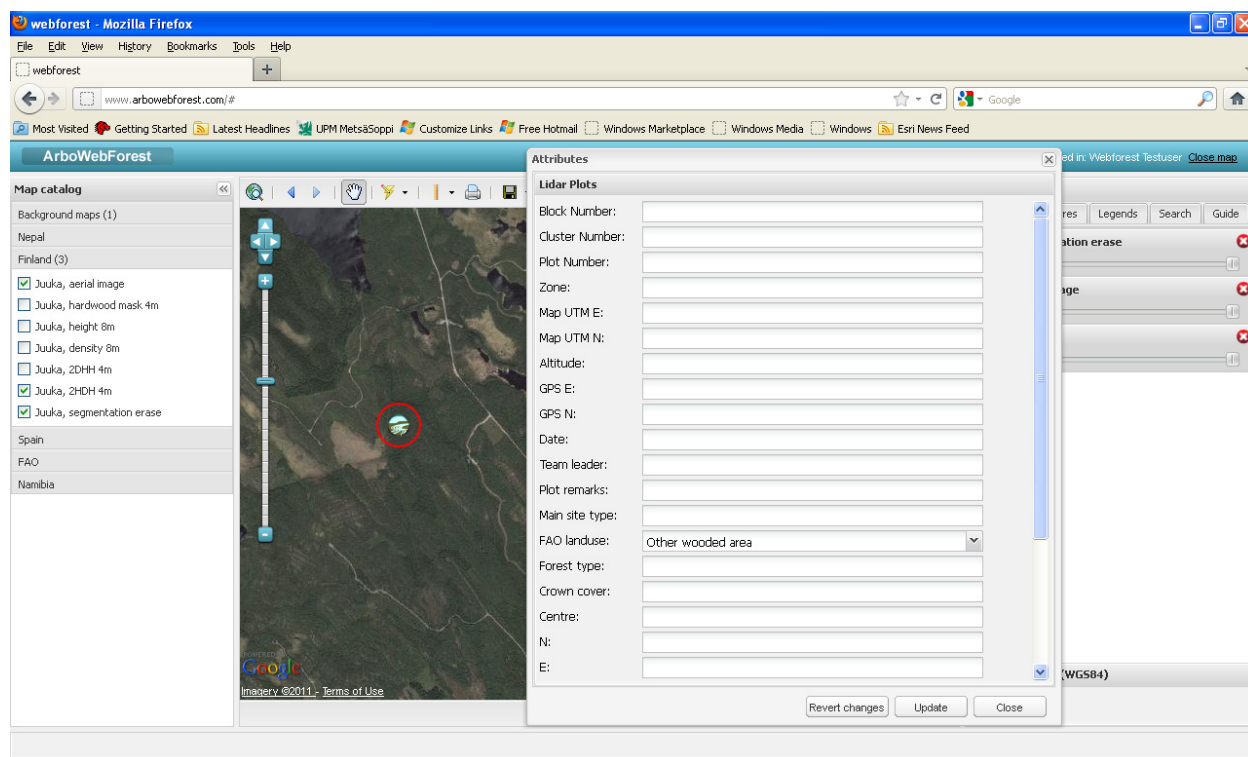


Figure 12. Attribute window in edit mode

When feature is in edit mode also the geometry of the feature (location of point feature, outline nodes of the line/area feature) can be edited. **Revert changes** revert the changes and returns attribute window back to view mode (shown in figure 5.). **Update** Update will save the changes into the database and returns attribute window back to view mode. **Close** closed the attribute window without saving the changes.

8.0 ADDING COMMENTS AND ATTACHMENTS TO FEATURES

8.0 ADDING COMMENTS AND ATTACHMENTS TO FEATURES

Comments and attachments can be added into map features in attribute window shown in figure 13.

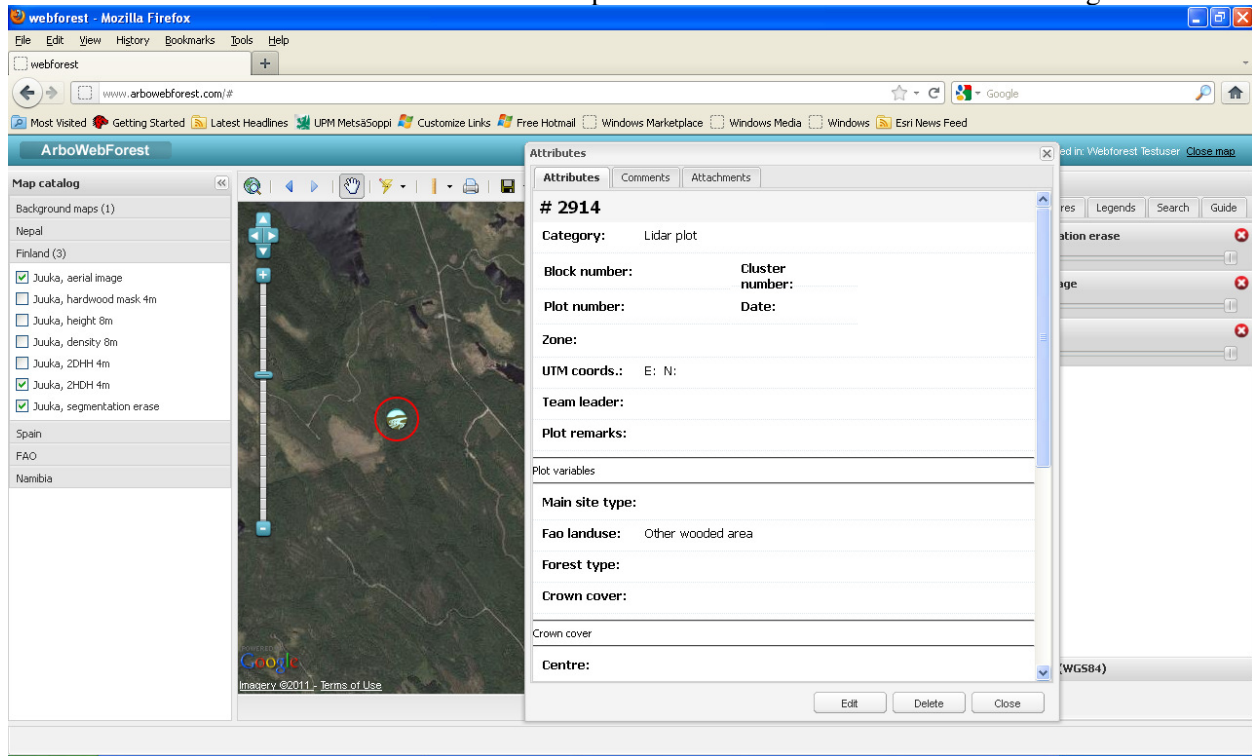


Figure 13. Attribute window of the feature

The Comments are shown in comment tab of the attribute window (see figure 14).

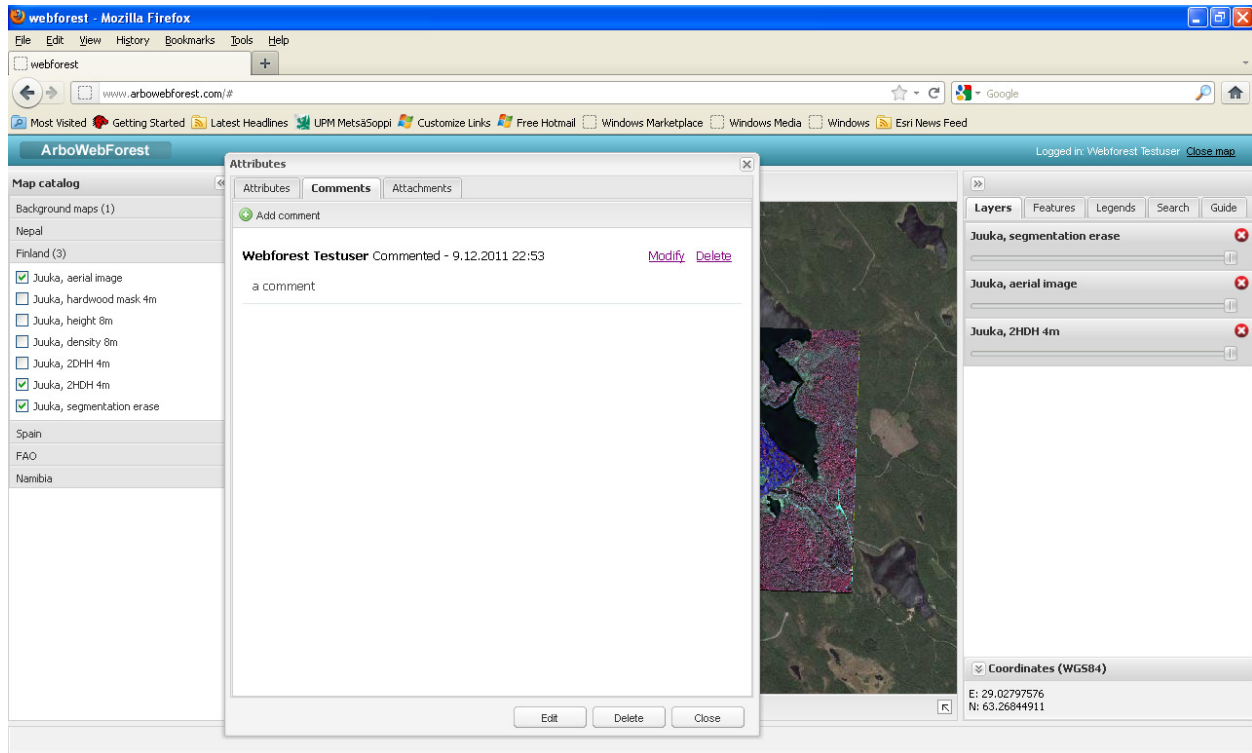


Figure 14. Comments tab of attribute window

Add comment link opens a comment editor, shown in figure 15, for writing a comment. Modify link opens the comment for editing in comment editor and delete link removes the comment.

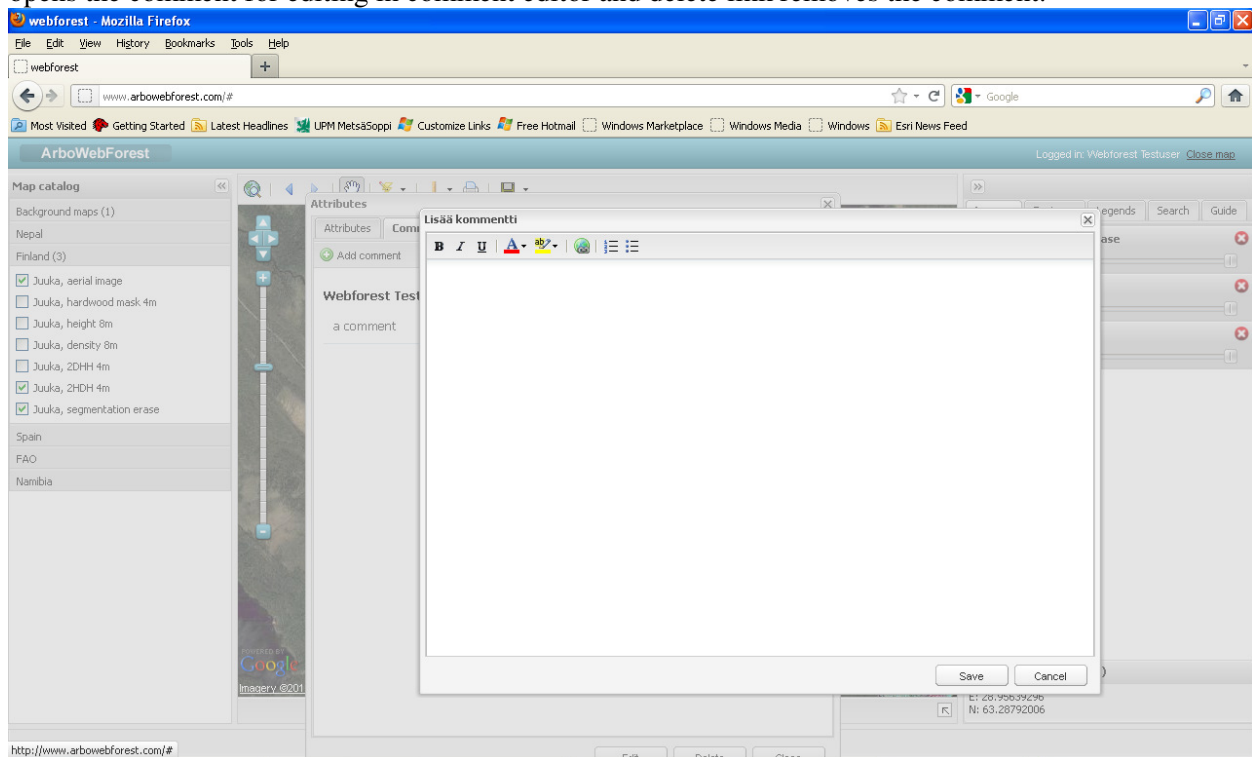
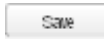



Figure 15. Comment editor

-  saves the comment and closes the comment editor.
-  closes the comment editor without saving the changes.

Attachments are shown in Attachment tab (see figure 16) of attribute window.

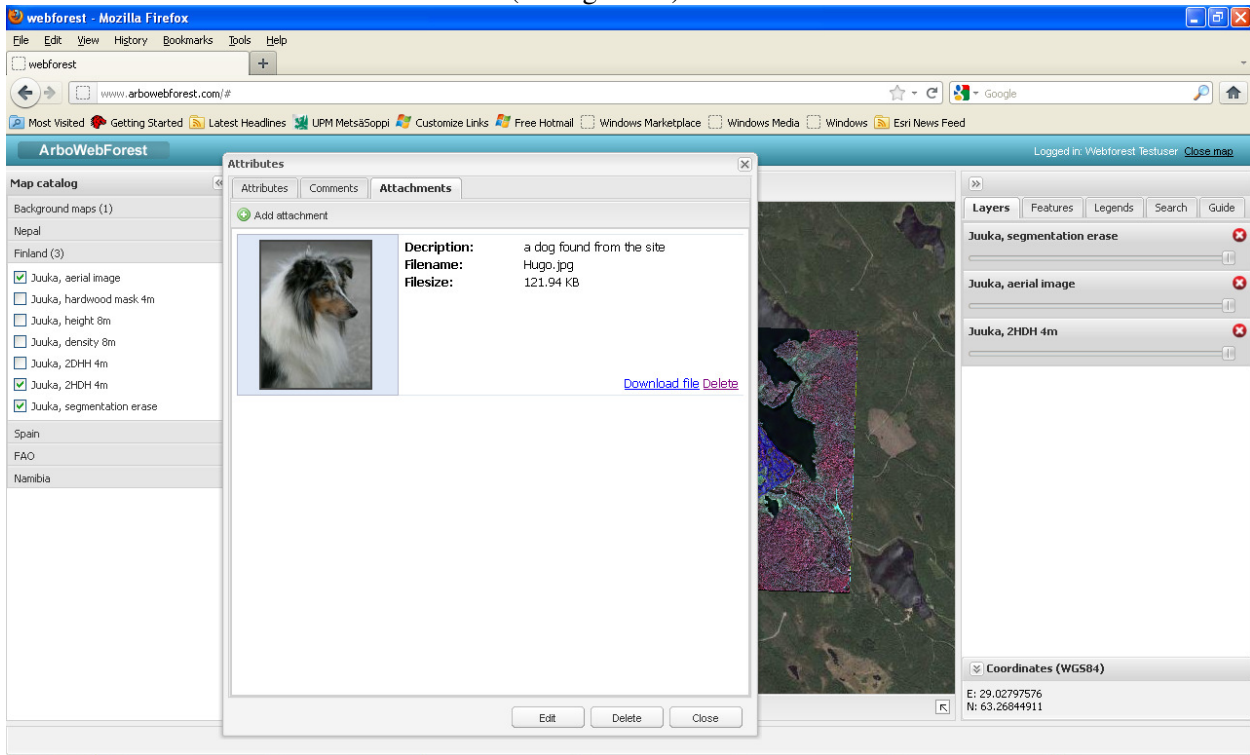


Figure 16. Attachments tab of attribute window

Download link will download the attachment to the local disk. Delete link will remove the attachment. If attachment is a picture it can be enlarged by clicking it. Add attachment link opens a add attachment dialog shown in figure 17.

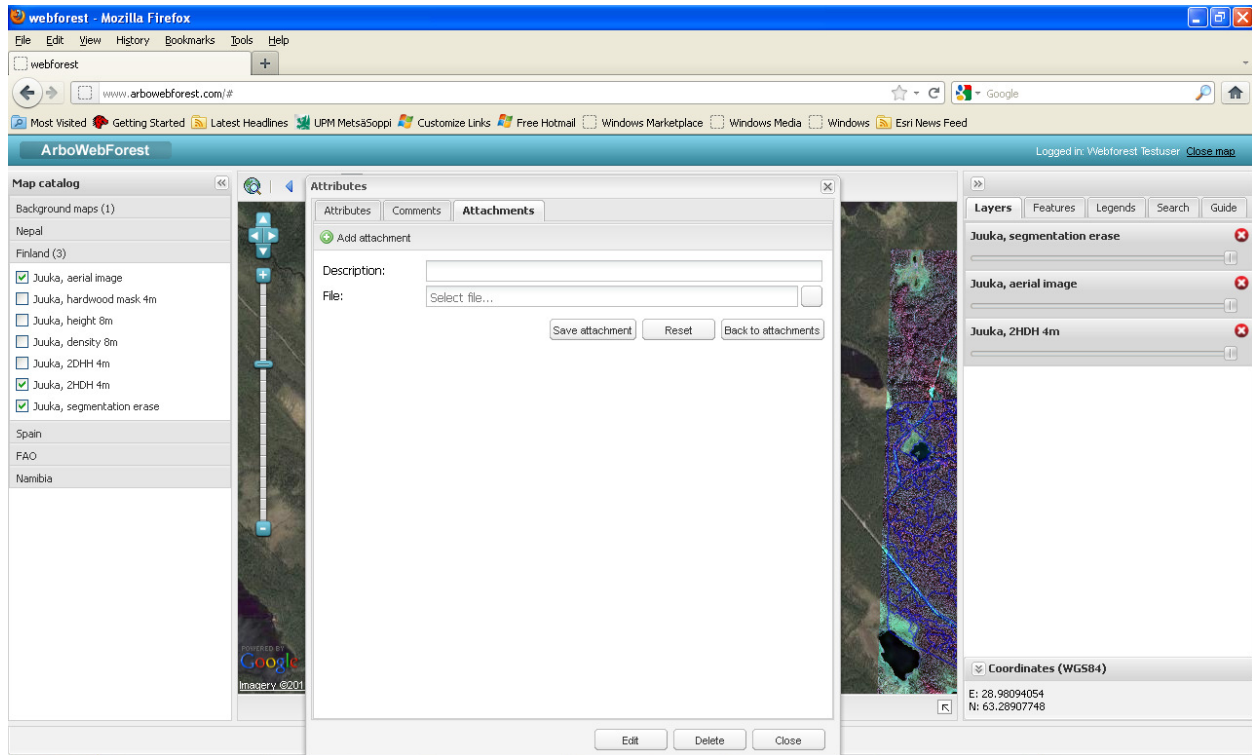


Figure 17. Add attachment dialog

- Save attachment** Uploads and saves the attachment and closes the add attachment dialog
- Reset** Resets the Description and file fields.
- Back to attachments** Closes the add attachment dialog without any changes.

9.0 IMPORTING AND EXPORTING DATA

9.0 IMPORTING AND EXPORTING DATA

Importing and exporting of data can be done only by Arbonaut personel. If there is a need to add new maps, aerial images, analysis results or import or export already existing plot data please contact awf@arbonaut.com.

10.0 CHANGING USER ID AND PASSWORD

10.0 CHANGING USER ID AND PASSWORD

User ID and password can be changed only by contacting awf@arbonaut.com.

11.0 EXIT SYSTEM

11.0 EXIT SYSTEM

The Close Map link on the top right corner of the ArboWebForest window will closed the application and log out the user.